

„Tworzywa”

Medical Equipment Producer since 1956

Jerzy Karasiński

Single use medical equipment catalogue



Certified Medical Equipment

1. Sterile single use enema set 1750 ml	p. 2
2. Sterile single use enema set 2000 ml (made of strengthened foil)	p. 3
3. Non sterile single use enema set 1750 ml	p. 4
4. Non sterile single use enema set 2000 ml (made of strengthened foil)	p. 5
5. Sterile single use contrasting anal infusion set	p. 6
6. Non sterile single use contrasting anal infusion set	p. 7
7. Sterile single use vaginal speculum	p. 8
8. Non sterile single use vaginal speculum	p. 9
9. Sterile single use cytological brush	p. 10
10. Sterile single use cytological brush with modified part which enter to the cervical canal	p. 11
11. Non sterile single use cytological brush	p. 12
12. Non sterile single use cytological brush with modified part which enter to the cervical canal	p. 13
13. Hanger for urine containers	p. 14
14. Contact	p. 15

Sterile single use enema set 1750ml

Catalogue no. 01/2005

Sterile single use enema set, without measuring function. Printed scale is approximated. The material used for manufacture of single use enema set doesn't contain harmful for living organisms phthalates and latex.

Specification :

- Sterilized by ethylene oxide

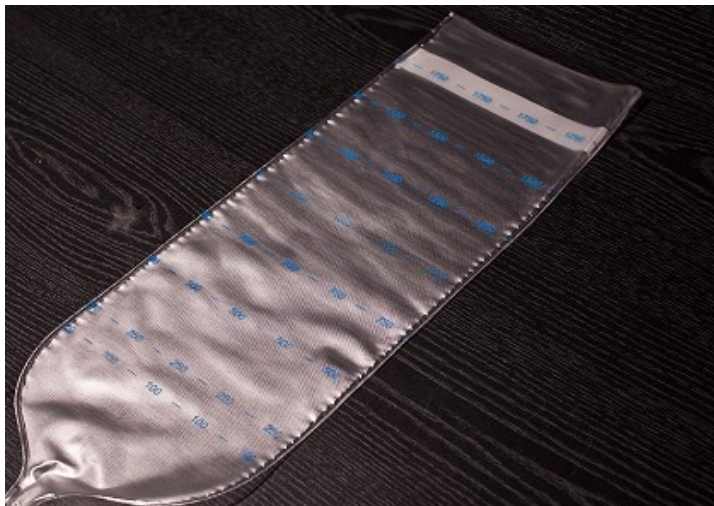
<i>Element</i>	<i>Dimensions [mm]</i>
PVC foil container, thickness 0.12-0.15mm	140 x 400
Approximated scale, without measuring function	100 – 1750 ml
Strip for hanging	140 x 20
Drain diameter	Ø 6
Drain length	1500
Clip for flow regulation	20 x 45
Plastic anal ending with a central hole (I)	90 x 10
Plastic anal ending with a central hole and two side holes (II)	90 x 10

Unit package 1X1

Cumulative package 100pcs.

Basic documents :

- CE Declaration of Conformity
- CE Certificate issued by EMKI Notified Body no. 1011
- Sterile single use enema set is registered in the Polish Office for Registration of Medicinal Products, Medical Devices and Biocidal Products



Sterile single use enema set 2000ml (made of strengthened foil)

Catalogue no. 01/2005

Sterile single use enema set, without measuring function. Printed scale is approximated. The material used for manufacture of single use enema set doesn't contain harmful for living organisms phthalates and latex.

Specification :

- Sterilized by ethylene oxide

<i>Element</i>	<i>Dimensions [mm]</i>
PVC foil container, thickness 0.12-0.15mm	165 x 400
Approximated scale, without measuring function	100 – 2000 ml
Strip for hanging	165 x 20
Drain diameter	Ø 6
Drain length	1500
Clip for flow regulation	20 x 45
Plastic anal ending with a central hole (I)	90 x 10
Plastic anal ending with a central hole and two side holes (II)	90 x 10

Unit package 1X1

Cumulative package 100pcs.

Basic documents :

- CE Declaration of Conformity
- CE Certificate issued by EMKI Notified Body no. 1011
- Sterile single use enema set is registered in the Polish Office for Registration of Medicinal Products, Medical Devices and Biocidal Products



Non sterile single use enema set 1750ml

Catalogue no. 01/2005

Single use enema set, without measuring function. Printed scale is approximated. The material used for manufacture of single use enema set doesn't contain harmful for living organisms phthalates and latex.

Specification :

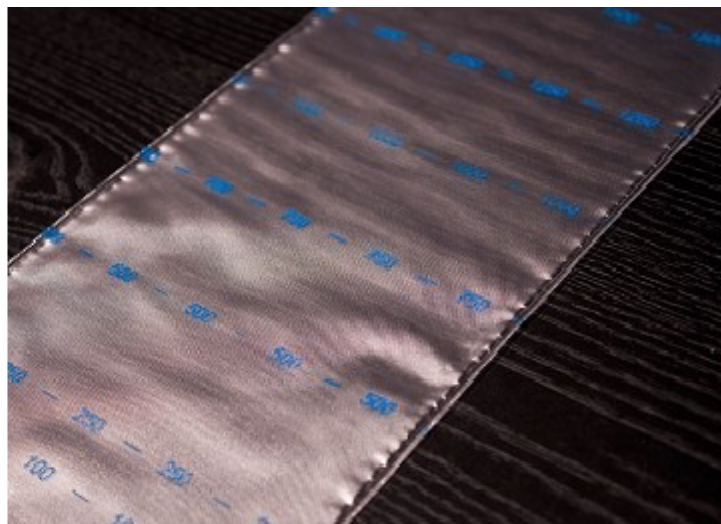
<i>Element</i>	<i>Dimensions [mm]</i>
PVC foil container, thickness 0.12-0.15mm	140 x 400
Approximated scale, without measuring function	100 – 2000 ml
Strip for hanging	140 x 20
Drain diameter	Ø 6
Drain length	1500
Clip for flow regulation	20 x 45
Plastic anal ending with a central hole (I)	90 x 10
Plastic anal ending with a central hole and two side holes (II)	90 x 10

Unit package 12X1

Cumulative package 120pcs.

Basic documents :

- CE Declaration of Conformity
- Non sterile single use enema set is registered in the Polish Office for Registration of Medicinal Products, Medical Devices and Biocidal Products



Non sterile single use enema set 2000ml (made of strengthened foil)

Catalogue no. 01/2005

Single use enema set, without measuring function. Printed scale is approximated. The material used for manufacture of single use enema set doesn't contain harmful for living organisms phthalates and latex.

Specification :

<i>Element</i>	<i>Dimensions [mm]</i>
PVC foil container, thickness 0.12-0.15 mm	165 x 400
Approximated scale, without measuring function	100 – 2000 ml
Strip for hanging	165 x 20
Drain diameter	Ø 6
Drain length	1500
Clip for flow regulation	20 x 45
Plastic anal ending with a central hole (I)	90 x 10
Plastic anal ending with a central hole and two side holes (II)	90 x 10

Unit package 12X1

Cumulative package 120pcs.

Basic documents :

- CE Declaration of Conformity
- Non sterile single use enema set is registered in the Polish Office for Registration of Medicinal Products, Medical Devices and Biocidal Products



Sterile single use contrasting anal infusion set (without barite)

Catalogue no. 02/2005

Sterile single use contrasting anal infusion set without measuring function, printed scale is approximated. The material used for manufacture of single use contrasting anal infusion set doesn't contain harmful for living organisms phthalates and latex.

Specification :

- Sterilized by ethylene oxide

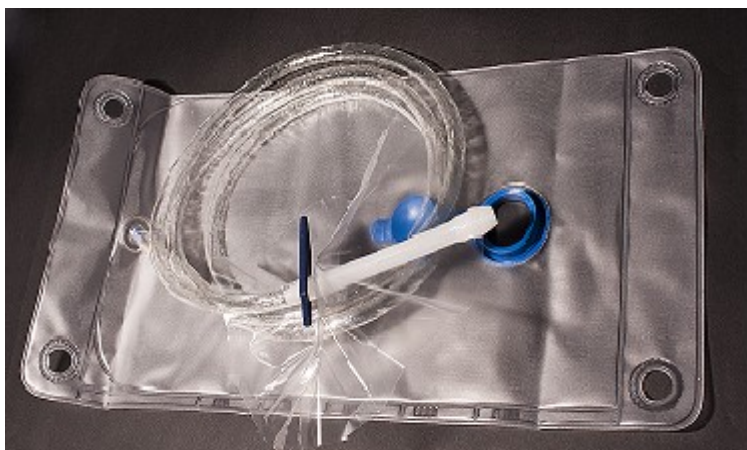
<i>Element</i>	<i>Dimensions [mm]</i>
PVC foil container, thickness 0.25 mm	400 x 200
Closing valve	Ø 29
Trigger valve with closing ball	Ø 6
Drain diameter	Ø 8
Drain length	1700
Clip for flow regulation	55 x 29
Pinafore for hand protection	Ø 210
Plastic anal ending	119

Unit package 1X1

Cumulative package 30 pcs.

Basic documents :

- CE Declaration of Conformity
- CE Certificate issued by EMKI Notified Body no. 1011
- Sterile single use contrasting anal infusion set is registered in the Polish Office for Registration of Medicinal Products, Medical Devices and Biocidal Products



Non sterile single use contrasting anal infusion set (without barite)

Catalogue no. 02/2005

Non sterile single use contrasting anal infusion set without measuring function, printed scale is approximated. The material used for manufacture of single use contrasting anal infusion set doesn't contain harmful for living organisms phthalates and latex.

Specification :

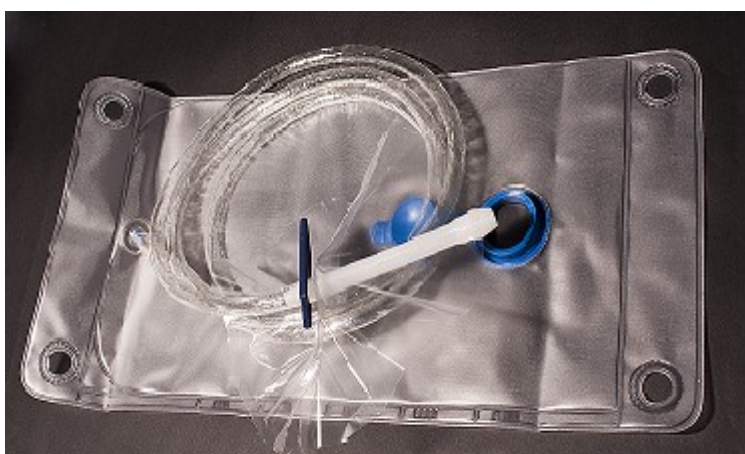
<i>Element</i>	<i>Dimensions [mm]</i>
PVC foil container, thickness 0.25 mm	400 x 200
Closing valve	Ø 29
Trigger valve with closing ball	Ø 6
Drain diameter	Ø 8
Drain length	1700
Clip for flow regulation	55 x 29
Pinafore for hand protection	Ø 210
Plastic anal ending	119

Unit package 1X1

Cumulative package 30 pcs.

Basic documents :

- CE Declaration of Conformity
- Non sterile single use contrasting anal infusion set is registered in the Polish Office for Registration of Medicinal Products, Medical Devices and Biocidal Products



Sterile single use vaginal speculum

Catalogue no. 03/2005

Sterile single use vaginal speculum is made for gynecological examination, allows observing side walls of vagina. Single use vaginal speculum produced by our company is made of strong, highly transparent, (available in transparent and white colour) no braking plastic. The material used for manufacture of specula does not contain harmful for living organisms phthalates and latex. Each Vaginal Speculum has a handle for hanging.

Specification :

- Sterilized by ethylene oxide

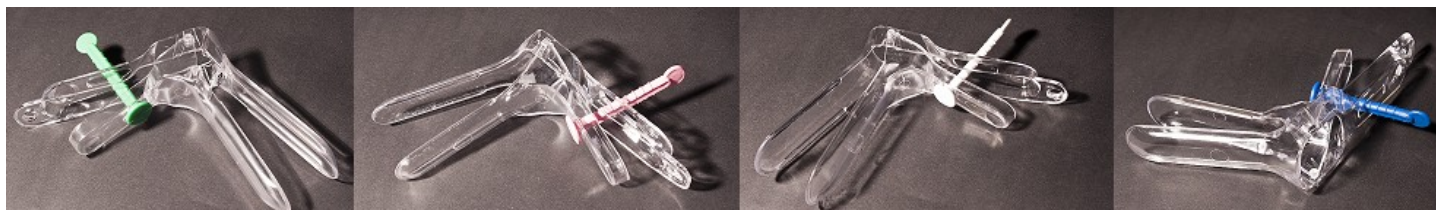
<i>Commercial designation</i>	<i>Dimensions [mm]</i>	<i>Regulator's colour</i>
XS - Nr 0	82 x 18,5	RÓŻOWA
S - Nr 1	82 x 24	ZIELONA
M - Nr 2	82 x 26.5	NIEBIESKA
L - Nr 3	82 x 33	BIAŁA

Unit package 1X1

Cumulative package 100 pcs.

Basic documents :

- CE Declaration of Conformity
- CE Certificate issued by EMKI Notified Body no. 1011
- Sterile single use vaginal speculum is registered in the Polish Office for Registration of Medicinal Products, Medical Devices and Biocidal Products



Non sterile single use vaginal speculum

Catalogue no. 03/2005

Non sterile single use vaginal speculum is made for gynecological examination, allows observing side walls of vagina. Single use vaginal speculum produced by our company is made of strong, highly transparent, (available in transparent and white colour) no braking plastic. The material used for manufacture of specula doesn't contain harmful for living organisms phthalates and latex. Each Vaginal Speculum has a handle for hanging.

Specification :

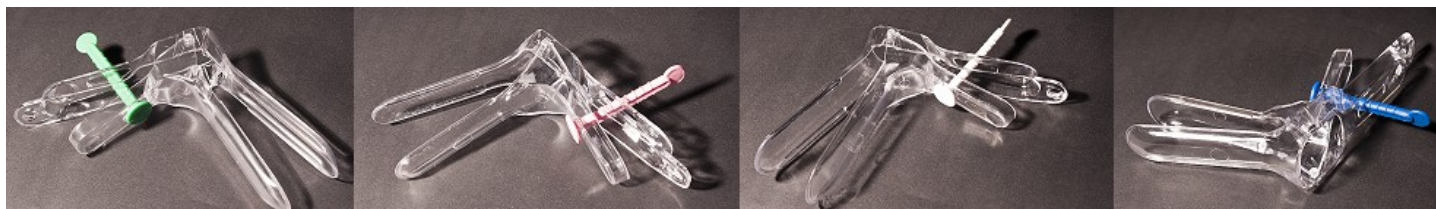
<i>Commercial designation</i>	<i>Dimensions [mm]</i>	<i>Regulator's colour</i>
XS - Nr 0	82 x 18,5	RÓŻOWA
S - Nr 1	82 x 24	ZIELONA
M - Nr 2	82 x 26.5	NIEBIESKA
L - Nr 3	82 x 33	BIAŁA

Unit package 1X1

Cumulative package 100 pcs.

Basic documents :

- CE Declaration of Conformity
- Non sterile single use vaginal speculum is registered in the Polish Office for Registration of Medicinal Products, Medical Devices and Biocidal Products



Sterile single use cytological brush

Catalogue no. 04/2005

Sterile cytological brush produced by our company is a sampling device which is used to collect cells from the inside of the endocervical canal, from the transition zone and from the ectocervix.

Specification :

- Sterilized by ethylene oxide
- Asymmetric construction of part which is used to obtain cell samples (asymmetrical brush)
- Brush made of flexible, non hurting and super soft material
- Brush consists of 24 semi-circular plastic bristles of various lengths

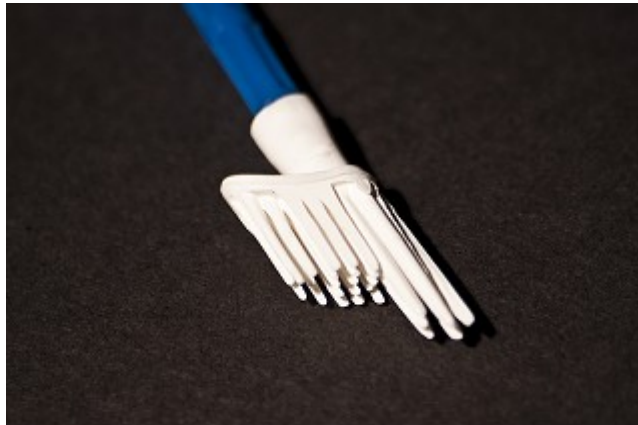
<i>Element</i>	<i>Dimensions [mm]</i>
Part taking smear from duct of cervix	15 X 4
Part taking smear from disc of cervix	10 X 6
Total length of brush	195

Unit package 1X1

Cumulative package 200 pcs.

Basic documents :

- CE Declaration of Conformity
- CE Certificate issued by EMKI Notified Body no. 1011
- Sterile single use cytological brush is registered in the Polish Office for Registration of Medicinal Products, Medical Devices and Biocidal Products



Sterile single use cytological brush with modified part which enter to the cervical canal

Catalogue no. 04/2005

Sterile cytological brush produced by our company is a sampling device which is used to collect cells from the inside of the endocervical canal, from the transition zone and from the ectocervix.

Specification :

- Sterilized by ethylene oxide
- Asymmetric construction of part which is used to obtain cell samples (asymmetrical brush)
- Brush made of flexible, non hurting and super soft material

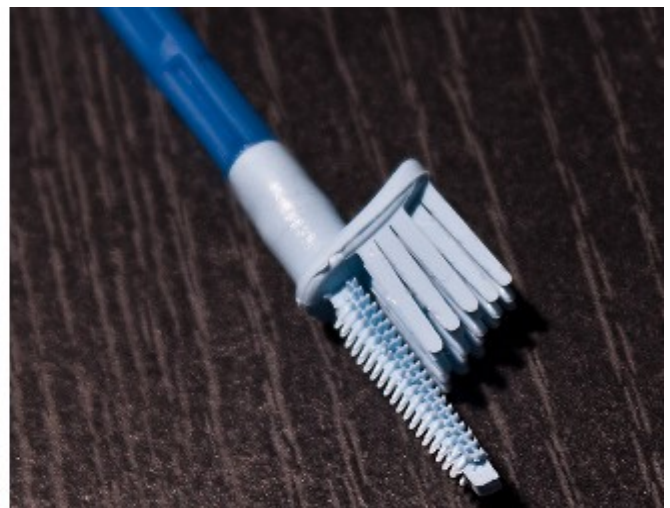
<i>Element</i>	<i>Dimensions [mm]</i>
Part taking smear from duct of cervix	15 X 4
Part taking smear from disc of cervix	10 X 6
Total length of brush	195

Unit package 1X1

Cumulative package 200 pcs.

Basic documents :

- CE Declaration of Conformity
- CE Certificate issued by EMKI Notified Body no. 1011
- Sterile single use cytological brush with modified part which enter to the cervical canal is registered in the Polish Office for Registration of Medicinal Products, Medical Devices and Biocidal Products



Non sterile single use cytological brush

Catalogue no. 04/2005

Cytological brush produced by our company is a sampling device which is used to collect cells from the inside of the endocervical canal, from the transition zone and from the ectocervix.

Specification :

- Asymmetric construction of part which is used to obtain cell samples (asymmetrical brush)
- Brush made of flexible, non hurting and super soft material
- Brush consists of 24 semi-circular plastic bristles of various lengths

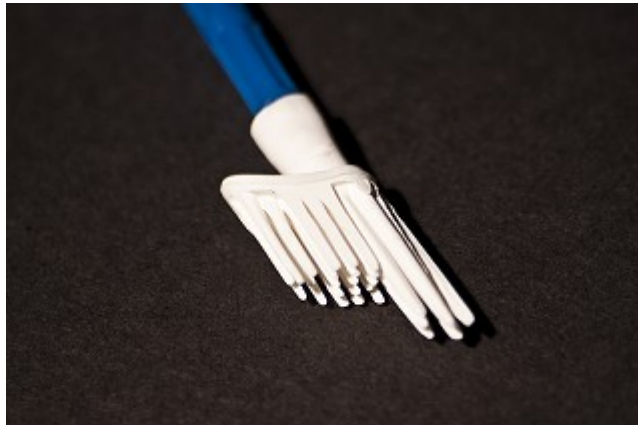
<i>Element</i>	<i>Dimensions [mm]</i>
Part taking smear from duct of cervix	15 X 4
Part taking smear from disc of cervix	10 X 6
Total length of brush	195

Unit package 100X1

Cumulative package 200 pcs.

Basic documents :

- CE Declaration of Conformity
- Non sterile single use cytological brush is registered in the Polish Office for Registration of Medicinal Products, Medical Devices and Biocidal Products



Non sterile single use cytological brush with modified part which enter to the cervical canal

Catalouge no. 04/2005

Cytological brush produced by our company is a sampling device which is used to collect cells from the inside of the endocervical canal, from the transition zone and from the ectocervix.

Specification :

- Asymmetric construction of part which is used to obtain cell samples (asymmetrical brush)
- Brush made of flexible, non hurting and super soft material

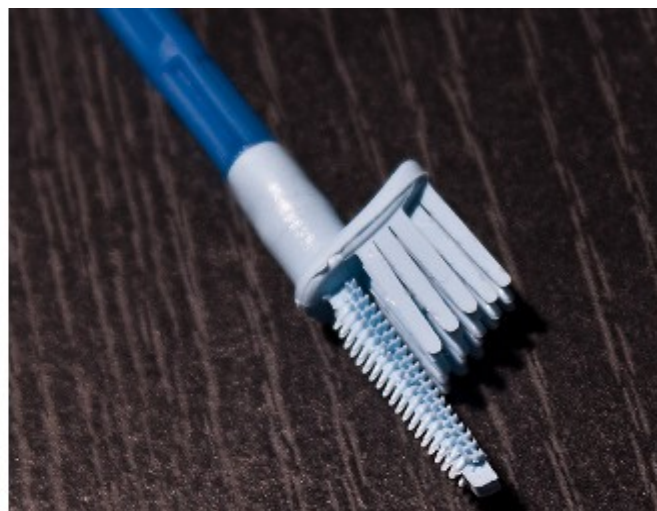
<i>Element</i>	<i>Dimensions [mm]</i>
Part taking smear from duct of cervix	15 X 4
Part taking smear from disc of cervix	10 X 6
Total length of brush	195

Unit package 100X1

Cumulative package 200 pcs.

Basic documents :

- CE Declaration of Conformity
- Non sterile single use cytological brush with modified part which enter to the cervical canal is registered in the Polish Office for Registration of Medicinal Products, Medical Devices and Biocidal Products



Hanger for urine containers

Catalogue no. 05/2005

Hanger is made for carrying urine containers next to the patient's bed.

Specification :

<i>Element</i>	<i>Dimensions [mm]</i>
Hanger	60 x 45
Arms for hanging containers	175 x 65
Material	POLIPROPYLEN J400
Maximum load	2,5 kg

Unit package 1X1

Cumulative package 250 pcs.

Basic documents :

- CE Declaration of Conformity
- Hanger for urine containers is registered in the Polish Office for Registration of Medicinal Products, Medical Devices and Biocidal Products



Contact

“TWORZYWA” Medical Equipment Producer

Karasiński Jerzy

Office:

Pugeta 8a Street, 51-628 Wrocław Poland

tel/fax No.: +48 713484839

Production:

Kościarzyńska 3 Street, 51-416 Wrocław Poland

tel. no. : +48 713252367

fax no.: +48 717856024

e-mail: tworzywa@ok.wroc.pl

web page: www.tworzywa.wroc.pl